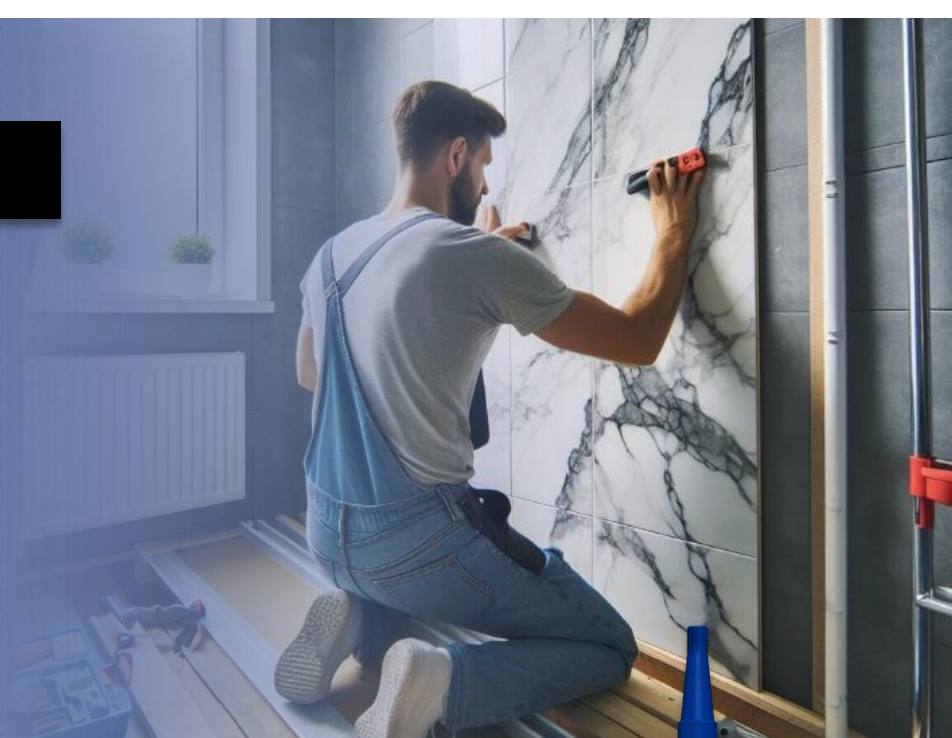


# DYNA-FIX®

## MS POLYMER



Professional MS Polymer Adhesive/Sealant that cures to form a strong, flexible, unbreakable & highly resistant bond with excellent adhesion.

Features



WEATHER RESISTANT



NON STAINABLE



PAINTABLE



REMAINS ELASTIC

Colors



Packaging

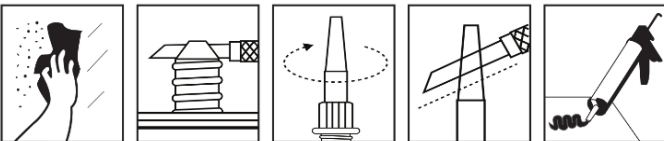


280 ml



12 units

Instructions



Approvals

